


VENTILATION

Smart ventilation,
healthy living



VENTILATION



 **Aerflux configurator**

THE FUTURE OF INDOOR VENTILATION STARTS HERE

With buildings becoming more airtight and energy-efficient, reliable ventilation is essential. At Ubbink, we believe that every home deserves clean, fresh air, because healthy living starts with a healthy indoor climate.

That's why we develop smart, sustainable ventilation solutions that make it easy for professionals to design homes that support long-term comfort and well-being.

Our complete range is designed with the installer in mind: quick to configure, easy to install, and built to perform. From intelligent planning tools to energy-efficient ventilation units and ductwork, every component works together to ensure top indoor air quality with minimal environmental impact.

Durable, efficient, and future-proof, Ubbink's integrated ventilation system is the smart choice for healthy living.



Aerflux configurator

Smart tool for fast, accurate ventilation design.



Ventilation ductworks

Delivers fresh air and removes stale air efficiently.



Heat recovery ventilation unit

Enhances air quality and reduces energy loss.



Insulated mass flow ductworks

Minimizes energy loss and prevents condensation.



Terminals and seals

Ensures airtight, watertight connections and steady airflow.



Supply and extract valves

Regulates and evenly distributes airflow.

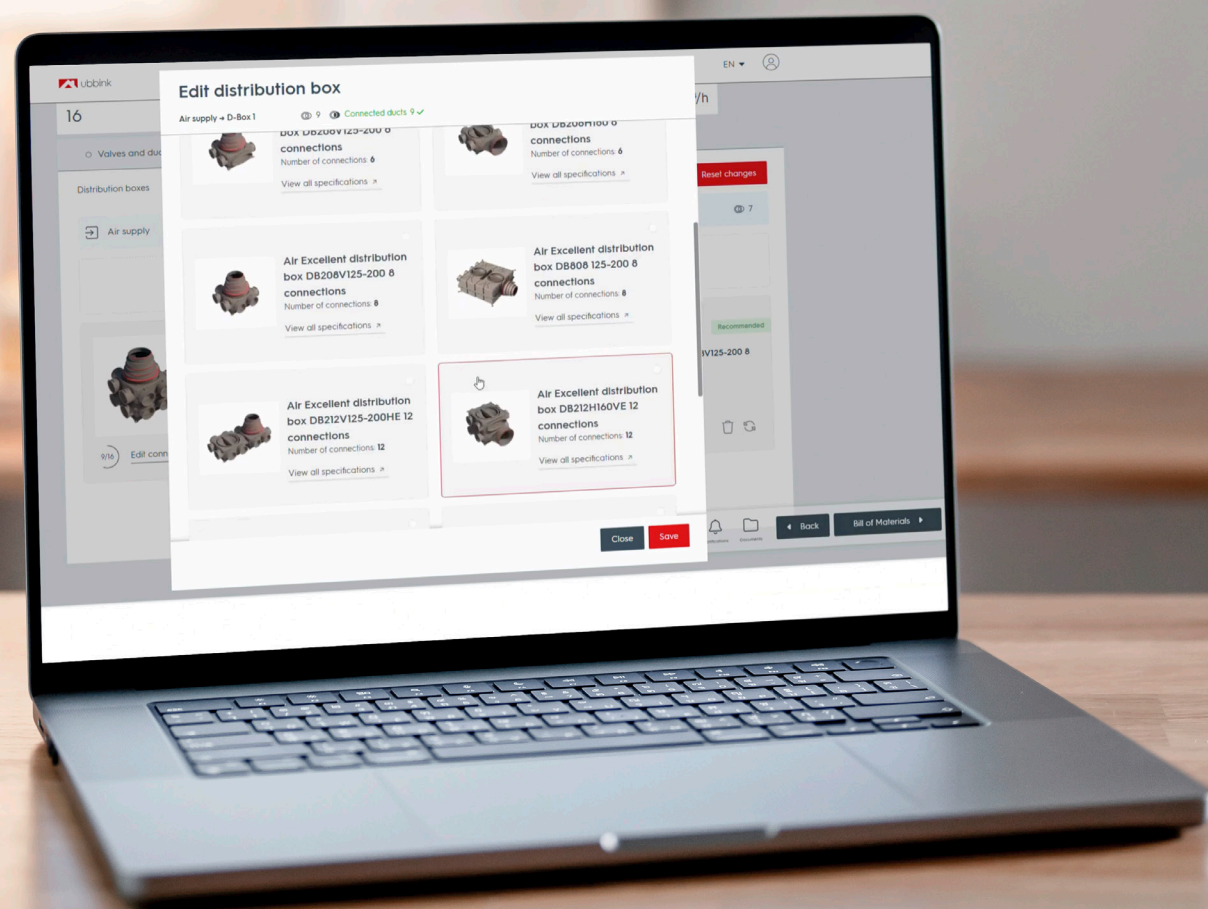


Aerflux configurator

Start every project with precision and confidence

At Ubbink, smart design begins with smart planning and the Aerflux Configurator gives you the clarity to get every detail right from the start. This smart tool simplifies the process of calculating ventilation requirements for the entire home in just a few steps, ensuring precision every time.

From generating airflow calculations to recommending the best components for your project, Aerflux makes designing ventilation systems faster and more reliable. Its easy-to-use interface and detailed reporting save time on-site, providing you with all the details needed to implement a high-performing ventilation system.



How it works

The Aerflux Configurator guides you through the process in three simple steps:

1. Set up your project

Name your project, specify the house location, and enter key details for easy access and future modifications, whether on desktop or mobile. You can even calculate the ventilation needs of multiple spaces under the same project.

2. Enter room sizes

Define your building's layout by adding floors and individual rooms. For each room, input the surface area.

3. View instant calculations

Once the room data is entered, the configurator automatically calculates the ventilation needs per space based on legal requirements, adjusting to the preferred airflow. If the air volume doesn't meet the standards, you'll receive a notification to ensure compliance.

From calculation to implementation

Once your calculations are complete, the Aerflux Configurator immediately generates the necessary components, air balancing, and a bill of materials. You can adjust component choices, quantities, and duct lengths based on the project's unique needs.

Your complete project package

With the configurator, you receive detailed reports that includes all selected components, cost overview and downloadable technical documentation. It's everything you need to finalize the project, create professional quotations and ensure seamless installation.

Our services



Project support

Our project team is here to provide expert advice, precise calculations, and tailor-made offers helping you complete every project efficiently.



Start-up service

You are an installer and you need a ventilation contractor to install your Ubbink ventilation system? Our approved partners can assist you.



Interventions

Malfunction or repair needed for your ventilation unit? Count on our experts for quick, reliable service.



Start your calculation



Air Excellent ventilation ductworks

Healthy air distribution, fast and professional installation

Every efficient ventilation system starts with a reliable air distribution network. Air Excellent is Ubbink's high-performance ductwork solution, designed for flexibility, ease of installation, and consistent comfort. Meeting the most restrictive ATC1 airtightness class, it ensures clean, healthy airflow throughout the home. From small renovations to large-scale new builds, Air Excellent simplifies every project while guaranteeing optimal indoor air quality.

This complete, modular system includes semi-rigid ducts, a wide range of accessories, and universal distribution boxes. Ducts are available in both circular and space-saving semi-circular shapes, featuring antistatic and antimicrobial properties to support a healthier indoor environment.

Designed for speed, built for quality

Air Excellent's mechanical connections click securely together, reducing installation time and guaranteeing an airtight system that meets the most restrictive ATC1 class, from the distribution boxes all the way to the valve adaptors. Its airtight construction delivers reliable airflow, energy efficiency, and a comfortable indoor environment. The robust and durable design keeps connections firmly in place, allowing for easy maintenance and cleaning.

The Air Excellent system is certified by TÜV SÜD and ISEGA.

BIM-ready design and fast commissioning for lifelong performance

All Air Excellent components are available as BIM files, enabling fully automated project planning. Commissioning is just as fast and intuitive: using the Aerflux Configurator, installers can balance airflow per room in minutes. By trimming pre-installed restrictor rings in the distribution boxes there is no need for flow meters or complex calibration, ensuring each room receives exactly the supply and extract airflow it requires.



The right duct for every project

Air Excellent provides a versatile duct system suitable for every type of construction: timber, concrete, or prefab. The system includes four duct sizes, available in circular and semi-circular shapes, all supplied on rolls and made from semi-rigid plastic for easy handling on-site. Its flexibility allows ducts to curve around obstacles, ensuring a clean and efficient installation regardless of layout or building constraints.

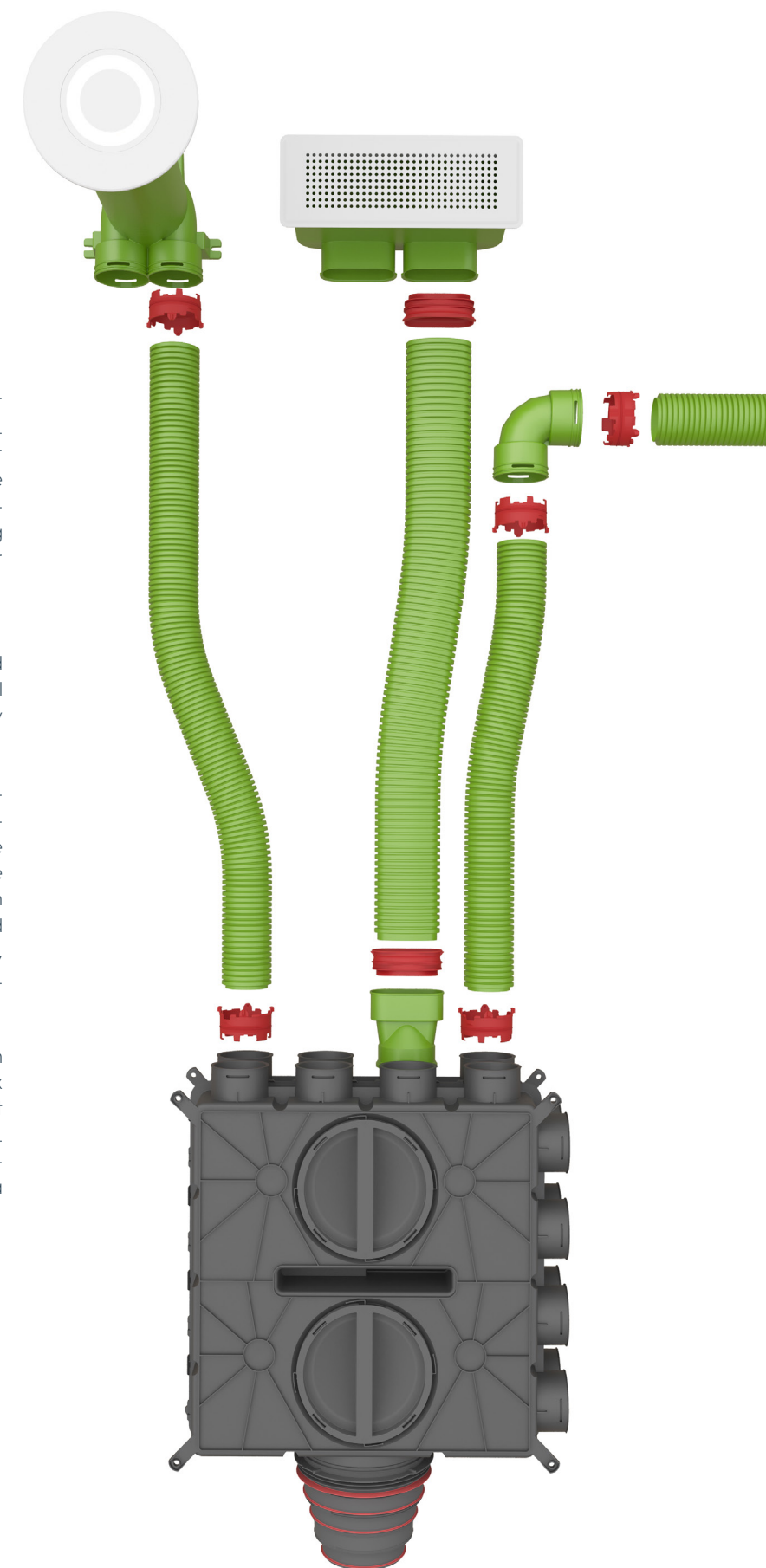
Distribution boxes that do the heavy lifting

Air Excellent's modular distribution boxes, DB200 and DB800, are designed for flexible installation and optimal airflow management. They can be mounted horizontally or vertically, in floors or walls.

The choice of distribution box depends on total air volume, number of duct runs, and desired system performance. The DB200 is ideal for smaller areas and can be extended horizontally or vertically. Both models feature openings for flexible configuration and easy inspection access. Mass flow ductwork connects via a stepped adaptor, adapting diameters from 125 mm to 200 mm, with connections possible both vertically and horizontally.

A system that works together

To enhance your ventilation solution, Air Excellent can be paired with other Ubbink components, such as Haelix valves, Aerfoam insulated mass flow ducts, Ubiflux heat recovery ventilation unit and roof or wall terminals. Together, they deliver reliable performance, faster installation, and peace of mind on every project, ensuring a healthy, comfortable indoor environment.





Ubiflux Vigor heat recovery ventilation units

Smart design and performance that works for you

The Ubiflux Vigor range makes balanced ventilation simple without compromising performance. From compact apartments to large residential projects, these high-efficiency MVHR units deliver reliable ventilation with easy installation, flexible connectivity, and minimal maintenance. With various models from 200 to 600m³/h, the range is ideal for any residential project requiring a balanced and energy-efficient ventilation system.



Accessories for enhanced performance

To tailor the Ubiflux system to each project, a full range of accessories is available. Options include wireless remote controls, CO₂ and humidity sensors for demand-controlled ventilation, as well as signal amplifiers to extend wireless range. Sound attenuators ensure quieter operation, while mounting chairs make installation even easier.



Built for easy installation

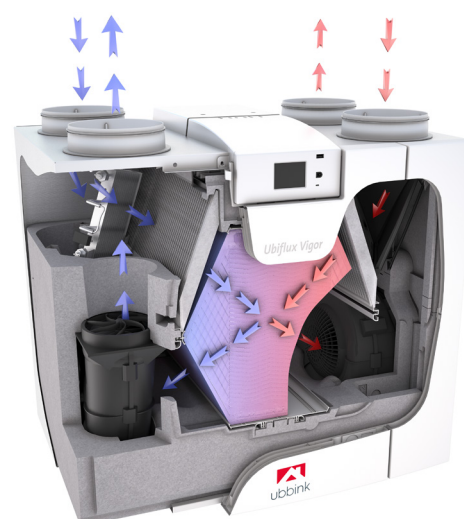
Ubiflux Vigor units are plug-and-play, making them quick to install right out of the box. Their compact format fits easily into cupboards, lofts and plant rooms, and wall-mounted design keeps your installation footprint low.

Each unit is available in left- or right-hand versions with top connections. Selected models also offer bottom connections for easier access to indoor air supply and extract below the unit giving you layout flexibility on-site.

Straightforward commissioning

Setting up the system is straightforward. The built-in touchscreen allows you to configure all settings directly, while airflow balancing can be carried out manually.

Constant-Flow 2.0 technology ensures supply and extract air volumes remain equal, so the system performs optimally without ongoing adjustments. The unit also includes diagnostic functions and alerts that notify you of any installation issues, filter changes, or service needs.



High performance, low energy use

Every Ubiflux Vigor unit features a high-efficiency heat exchanger, with enthalpic solutions available, developed for optimal thermal recovery with minimal pressure drop. The aerodynamic design ensures quiet operation, even at higher ventilation capacities. Certified by Passivhaus, they meet the highest efficiency and acoustic standards required in modern low-energy homes.

For added efficiency, all units include a 100% automatic summer bypass, frost protection with preheater, and low-energy fans with constant flow operation.

Smart connectivity and control

Ubiflux Vigor is future-proof and ready for smart integration. All units come standard with RJ12, e-bus, and Modbus connections. You can also upgrade with the optional Plus board.

Effortless maintenance

Maintenance has been made as easy as the installation. The touchscreen provides filter change alerts and system diagnostics. Components are accessible and service parts are standardized across the range, meaning fewer spares to stock and simpler servicing overall.

From installation to long-term operation, Ubiflux Vigor helps you deliver top-quality ventilation—efficiently, confidently, and with less time on site.



Aerfoam insulated mass flow ductworks

The insulated ductwork system for mass flow applications

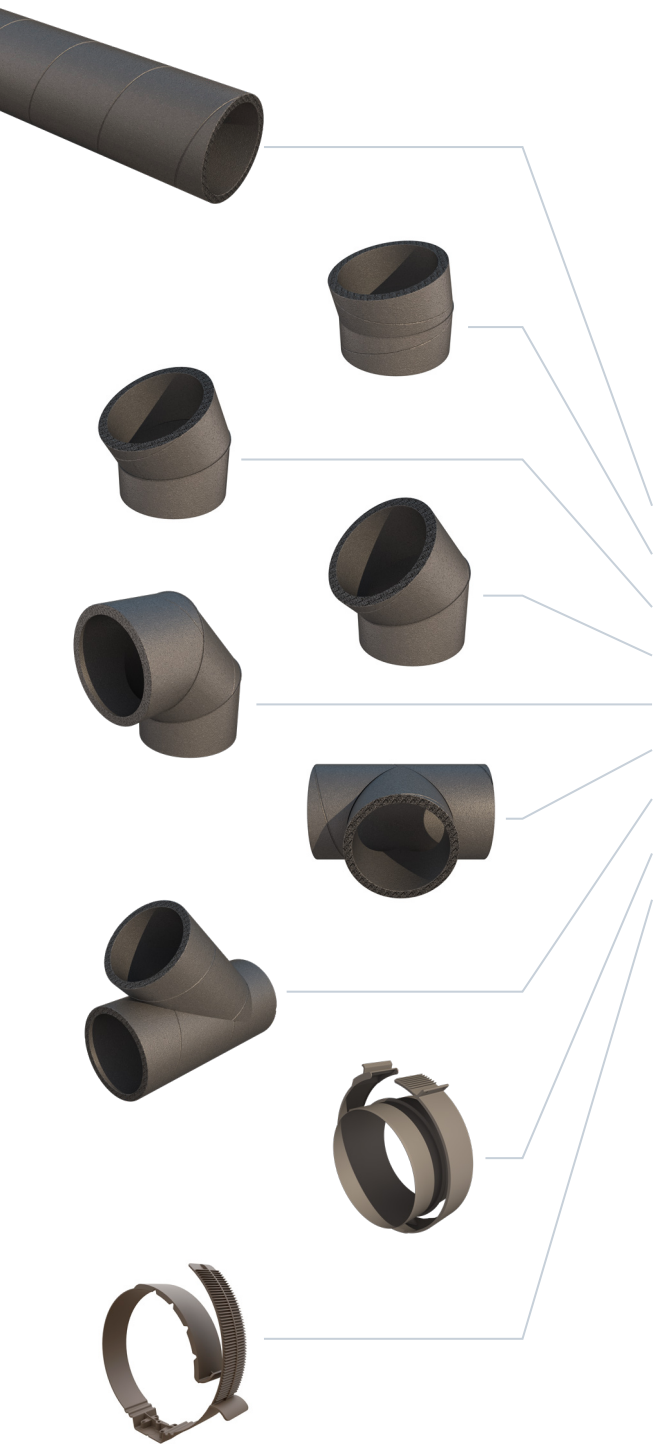
To move air volumes efficiently, insulation and airtightness are key, that's where Aerfoam comes in. This complete and universal ductwork solution connects central mechanical ventilation units, roof or wall terminals, and distribution boxes. Designed for use in both ccentral mechanical ventilation and domestic hot water heat pump systems, Aerfoam ensures optimal performance and comfort.

Thanks to its integrated insulation, Aerfoam minimises the risk of condensation and energy loss.

Made from lightweight, impact-resistant EPE, Aerfoam is easy to cut, handle, and install. Its strong, airtight mechanical connections need no tape, glue, or screws, saving time while ensuring reliable performance. With a full range of diameters, bends, and accessories, Aerfoam delivers an efficient, future-proof ductwork solution for residential ventilation.

Key features of the Aerfoam ductwork system:

- Insulated, minimising the risk of condensation and energy loss
- Smooth, non-porous inner surface for minimal pressure loss and low fan energy use
- Airtight mechanical connections
- Lightweight, flexible, and impact-resistant EPE material
- Quick and safe to install
- Maintenance-friendly
- Tool-free assembly and easy to dismantle



A complete system

Aerfoam is available in five diameters: 125, 150, 160, 180, and 200 mm. Each diameter includes a full set of compatible fittings: bends, T- or Y-pieces, connectors and wall brackets.

| Component overview per diameter: | | | | |
|----------------------------------|-------|--------------------|----------|-------------------------|
| Diameter (mm) | Ducts | Bends | Branches | Accessories |
| 125 | 2 m | 15°, 30°, 45°, 90° | T-piece | Connector, wall bracket |
| 150 | 2 m | 45°, 90° | - | Connector, wall bracket |
| 160 | 2 m | 15°, 30°, 45°, 90° | T-piece | Connector, wall bracket |
| 180 | 2 m | 15°, 30°, 45°, 90° | Y-piece | Connector, wall bracket |
| 200 | 2 m | 15°, 30°, 45°, 90° | T-piece | Connector, wall bracket |

Universal compatibility

Aerfoam works with nearly all central ventilation units and fits any construction type from single-family homes to apartment blocks, from timber frame to concrete, from prefab to traditional builds.



Terminals and airtight seals

Reliable roof and wall penetrations that perform

When installing central mechanical ventilation systems, roof and wall terminals play a critical role. They connect the indoor ductwork to the outside air and if not done properly, these points can become weak spots in the building envelope. That's why Ubbink offers a complete range of high-performance terminals and airtight seals for flat and pitched roofs, tailored to meet today's demands for energy-efficient, airtight and watertight construction.



Built for speed and performance

Ubbink's roof and wall terminals are designed to make your installation process straightforward and reliable from planning through to on-site execution. The latest generation of terminals combines smart design with practical advantages that help you work faster and deliver high-performance results.

Faster, more precise installation

Ubbink's terminals like Ventus and Contego feature perpendicular penetrations. That means you can drill clean, round holes through walls and roofs, making the job quicker and more accurate, especially when working with insulation layers.

Airtight, watertight and energy-efficient

The terminals are designed to maintain the integrity of the building envelope. Screw-fixed and self-adhesive airtight seals, combined with the integrated roof flashing, ensure total protection against air leaks and water intrusion. The result: no uncontrolled air loss, no thermal bridging, and no risk of moisture damage ensuring energy efficiency and durability.

Smart, compact designs

Shorter internal duct lengths and optimised airflow reduce pressure losses. That means quieter systems and less fan power loss, which improves energy efficiency.

Ready for any roof or wall

Available in all common duct sizes, Ubbink terminals integrate seamlessly into any roof type, tile format or façade. They are suitable for air supply and/or extraction, and can be combined with Ubbink's ductwork systems like Aerfoam.

The range at a glance

Ventus

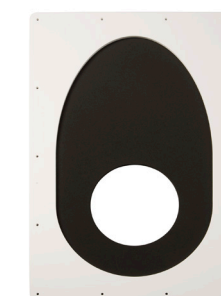
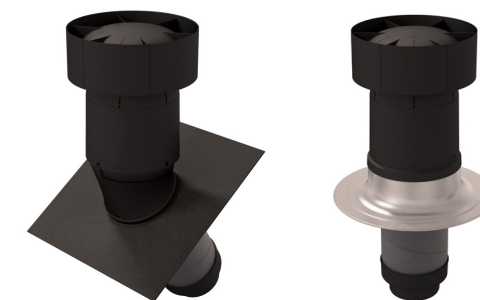
A universal, insulated roof terminal with a stepless tilt adjustment for perfect alignment on roof pitches between 15° and 55°. Supplied as a fully integrated roof solution for both supply and exhaust.

Contego

A modern wall terminal suitable for central mechanical ventilation, handling both supply and extract air. Combines clean aesthetics with practical installation features, making it an ideal choice for both new builds and renovations.

Airtight seals

Available for both roof and wall applications. The screw-fixed and self-adhesive airtight seals ensure long-lasting airtightness and reliable performance.



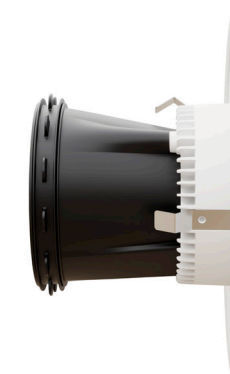
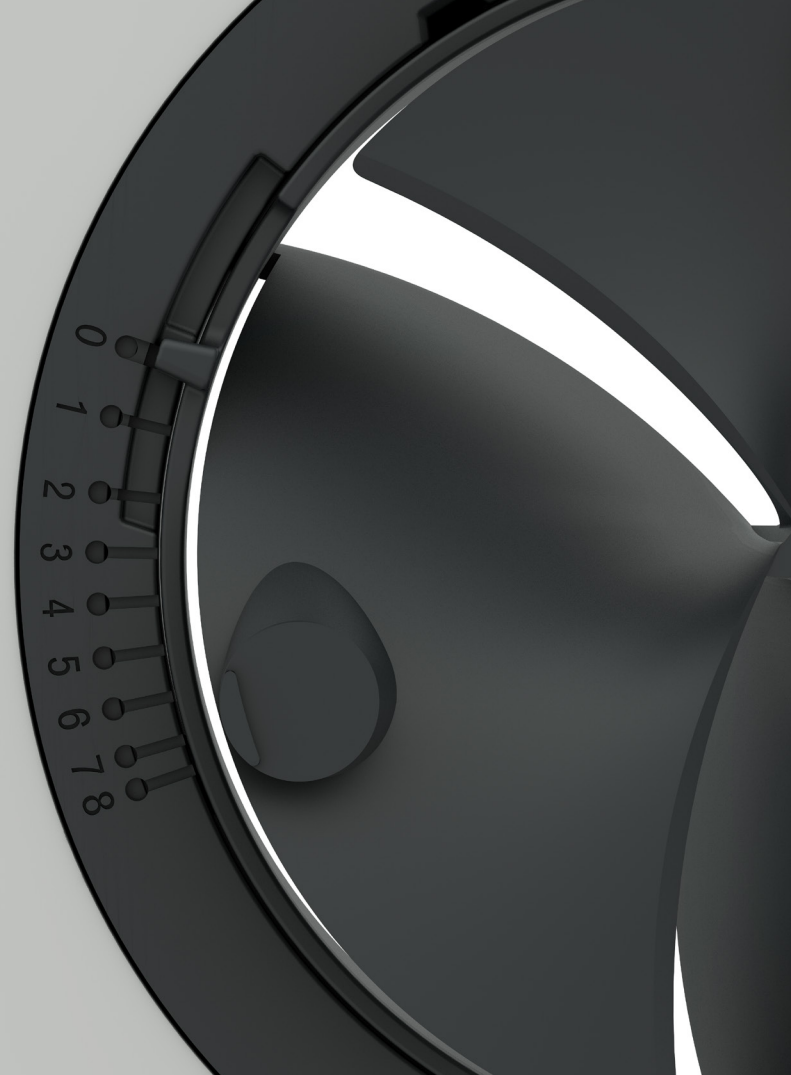


Supply and extract valves

Where performance meets design

The final touch matters and with Haelix valves, you can deliver both technical precision and visual harmony. Haelix valves ensure efficient airflow control and a seamless aesthetic finish, fitting perfectly into Ubbink's Air Excellent system for quick, tool-free installation and lasting reliability.

For projects that demand both performance and design flexibility, the Haelix Stella even combines ventilation and lighting in one sleek, integrated solution.



The Haelix valves, available in round or square designs, are all about ease and efficiency on site. The valve clicks effortlessly into place, fitting the Ubbink Air Excellent adaptor. The EPDM seal-ring ensures a secure, airtight connection for a fast and professional result.

Haelix is suitable for both air supply and extract applications, and adaptable to walls or ceilings. Its fan-shaped air distributor optimizes airflow using the Coanda effect, delivering quiet operation and maximum comfort.

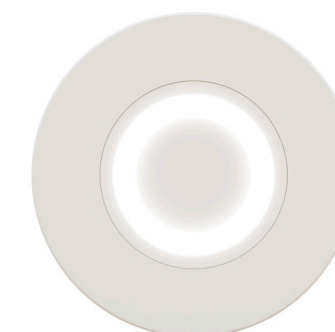
The integrated 9-stage flow restrictor allows precise air volume adjustment, accommodating system variations with ease. Meanwhile, the border flange prevents dust deposits on surfaces, keeping the finish clean and neat over time.

Why Haelix?

- Effortless installation with tool-free placement
- Flexible design for walls and ceilings
- Enhanced airflow for superior comfort and efficiency
- Clean, modern look to complement any interior

Ventilation and lighting in one

The Haelix Stella takes this one step further, combining air supply or extract with integrated LED lighting in a single product. Ideal for modern residential projects, it reduces components and speeds up installation while delivering a sleek, minimal finish.





ENERGY



VENTILATION



BUILDING



Ubbink (UK) Ltd

@ info@ubbink.co.uk •  www.ubbink.com/gb/

Copyright © 2025 Ubbink | Content is subject to change without notice; no liability for errors and misprints | Availability and configurations may differ per country. | UB-2026-02-V02-UK-EN